

BLUE BEARD

By Hélène Blackburn

Technical ryder

Update: September 18, 2007

BLUE BEARD
by Hélène Blackburn
Technical Ryder 1/4

Dressing rooms :

- Enough dressing rooms to accommodate 5 dancers and 3 persons from the production team
- The rooms must be clean, well lit and heated (21 degrees Celsius). Each room must be equipped with tables, adequate lighting for make-up, chairs, mirrors, toilets, sinks and showers as well as a costume rack and hangers.
- A wardrobe person should be available before each performance to clean costumes. This person should have access to a washer, dryer, iron and ironing board or clothes steamer.

Catering :

- The Company requires bottled spring water and a large tray of fresh fruit for the dancers and the crew
- Three kilos of ice cubes should be available in the dressing rooms in case of injuries.

Rehearsal space :

- Depending on the set-up schedule we need rehearsal space
- Appropriate space for rehearsal and dance class – ideally in the same building as the theatre – equipped with a wooden floor covered with a marley dance floor, a CD player and ballet bars large enough for 5 dancers (these bars should also be available for the stage).

Stage :

- Bare stage (no curtains or masking)
- If walls are not painted black, please inform the Technical Director.
- The stage must have a wooden floor with good resilience covered with a black marley dance floor in good condition, without any unevenness.
- Dimensions of the stage :
 - width : 30' (10 metres) minimum
 - depth : 25' (8 metres) minimum
 - height (fly bars) : between 17' and 25' (6 to 8 metres)
 - wings : minimum of 4' (1.5 metres) each side

- Presenter must provide :**
- 1 black marley dance floor covering the entire stage
 - 4 rolls of black matte gaffer tape

If presenter is unable to provide a dance floor, please inform the Technical Director.

Lighting and sound booth :

- The lighting and sound booth should face the stage at a distance of approximately 45 feet (20 metres) and should be big enough to accommodate 3 persons
- A mobile intercom system for 3 persons will be needed (sound, lighting and back stage).

BLUE BEARD
by Hélène Blackburn
Technical Ryder 2/4

Lighting :

48 **DMX** dimmers, 2,4KW each

30 PROFILES 36° or 50° (to be discussed)

18 PAR 64 MFL or WFL (to be discussed)

18 FRESNELS 1KW with barn doors

10 FRESNELS 2KW with barn doors

6 floor stands

It is possible to adapt the light plot to facilitate the setup. For European tours some instruments can be replaced by Pcs with the consent of the company's technical director.

All the wiring, projectors, gel holders, and clamps are to be provided by the presenter.

All lighting filters are provided by the company

The Company will provide a COMPULITE SPARK lighting console or a Horizon system.

A DMX link to the dimmer pack must be provided by the Presenter.

Props/accessories :

The props comprise several sheets of corrugated iron, attached to a lighting bridge* located at the back of the stage. Total weight of this structure is approximately 200 kg.

*see annex

BLUE BEARD
by Hélène Blackburn
Technical Ryder 3/4

Video :

The company will provide a video kit comprised of :

- 1 video projector
- 1 camera
- 1 DVD player
- 1 mixer
- 1 monitor
- 1 BNC cable lot

Please note that the camera and projector are on stage, near the downstage edge.

Sound :

A stereophonic sound system capable of reproducing 30 to 18,000 Hz at 110 dB SPL.

- 2 speakers covering all frequencies, hung or on stands, facing the public, on each side of the stage
- 1 stereo amplifier for the FOH
- 1 stereo graphic equaliser, 31 bands
- 2 subwoofers, one on each side of the stage
- 1 stereo amplifier for the subwoofers
- 1 crossover designed for that system

- 2 sidefields stage monitors (200W or more), one hidden on each side of the stage
- 1 amplifier (200W or more)
- 1 graphic equaliser (31 band)

A sound board offering 10 inputs, 2 aux sends (POST) and 2 group out.

1 Yamaha SPX 990 reverb units (no equivalence)

All cables and adapters necessary for the system.

The Company will provide two Numark CD players.

The Company will provide 3 AKG HM-1000 mini-shotgun microphones that must be installed downstage.

Technical crew :

- 6 technicians and 1 technical Director who are familiar with the theatre and its equipment
- the Technical Director and a wardrobe person must be available for the technical rehearsal and the performances
- all must be skilled professionals.

BLUE BEARD
by H  l  ne Blackburn
Technical Ryder 4/4

Floor Plans:

Preparation for each performances will be greatly facilitated if the Presenter provides the following 6 weeks in advance :

- A ground plan, the electrical plan, a section plan (scale: 1/4"=1' or 1:50) as well as inventory of all the lighting and sound equipment.

Set-up and strike:

12 hours are required for set-up prior to the first performance. The exact schedule is to be discussed between technical Directors.

The show is 40 minutes long, plus an Introduction and/or Question and Answer period, if need be.

4 hours are needed for the strike.

For more information, please contact:

Samuel Th  riault, Technical Director

Phone: 1 (514) 758-4177

E-mail : samuel_dt@studiocatimini.com

The technical ryder is part of the contract and must be respected by the Presenter.

Cas Public

Engager

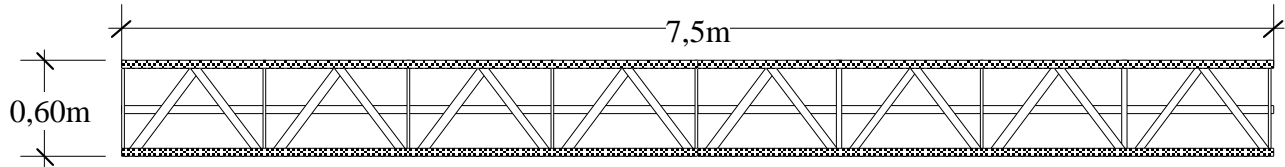
Date

Date

- ANNEX -

Presenter must provide : -CO2 gas bottle for MDG smoke machine (company will provide the smoke machine)
-Triangular bridge

TRIANGULAR BRIDGE -FRONT-



TRIANGULAR BRIDGE -CROSS SECTION-

